



1) бері
 $m = 1 \text{ кг}$
 $l = 2 \text{ м}$
 $\mu = 0,5$
 $A = ?$

Шешімі:
 1) $F = mg ; F = 1 \cdot 10 = 10 \text{ Н}$
 $g = 10 \text{ Н/кг}$
 $A = \frac{F}{S} = \frac{10 \text{ Н}}{2 \text{ м}} = 5 \text{ гнө}$

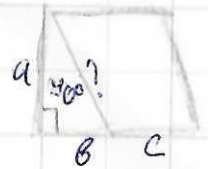


2) $t_1 = 60^\circ \text{C}$
 $t_2 = 75,5^\circ \text{C}$
 $t_{\text{сол}} = ?$

Шешімі:
 $t_{\text{сол}} = ?$
 $Q = cm(t_2 - t_1)$
 $t_{\text{сол}} = (75,5^\circ - 60^\circ) = 15,5^\circ \text{C}$

3) бері
 $b = 10 \text{ см}$
 $c = 20 \text{ см}$
 $a = 20 \text{ см}$
 $a = c$
 $\rho = 1000 \text{ кг/м}^3$
 $P = ?$

Шешімі:
 $S = a + b + c = (1000 \text{ см}^2) = 40 \text{ м}^2 = 50 \text{ м}$
 $P = \frac{F}{S} ; P = \frac{400.000}{50 \text{ м}^2} = 8000 \text{ Па}$
 $\rho = \frac{m}{V} ; m = \frac{1000 \cdot 40}{1} = 40.000$
 $V = b \cdot c \cdot a = 1000 \text{ см}^3 = 10 \text{ м}^3 ; F = mg = 400.000$



$m/d = 8000 \text{ Па}$

4) бері:
 $c = 10 \text{ мм қо}$
 $\varphi = 300 \text{ В}$
 $q = ?$

Шешімі:
 $q_1 = \frac{c}{\varphi} = q_1 = \frac{10 \cdot 10^{-6}}{300} = 0,00000033 \text{ а}$
 $q_2 = \frac{q}{\rho c} = \frac{300}{10 \cdot 10^{-6}} = 3.000.000$

$q = c \rho = 300 \cdot 1000 = 300.000 \text{ а}$
 $= 300 \cdot 0,000001 = 0,3$

